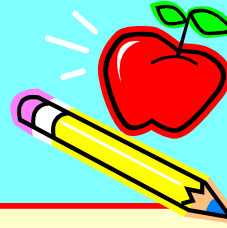




WELCOME TO  
RIDGE VIEW!



Ridge View  
Elementary  
September 2018

# Kindergarten NEWS

## Kindergarten Rocks!

Parents—Thank you so much for all of your generous supplies donations! It will really help all of our kiddos on a daily basis!

Also, we can't say enough about how excited we are for this school year...the kids have been doing so well in the short amount of time we've had them and we know it will be a wonderful year! If you ever have any questions or concerns, please feel free to email, call, or stop by.

### Upcoming Events

9/14: Donuts with Dad, 8:15-8:40am

9/20: PTO Meeting, 6:30pm RV Library

9/27: Individual Picture Day

### Parent Parking

Please park your car in the street and walk to the front of the school to pick up or drop off your child at school.

As per school policy, and for the personal safety of your child, we will not let them cross the road or enter the parking lot on their own. Please do not park in the bus loop and please no "quick drop off or pick-ups" in the staff parking lot.

## Kindergarten Assessment

The Kennewick School District kindergarten assessment will begin soon! Each student will be taken out of the room with a KSD test proctor (usually a retired teacher! ☺) for a short time to assess all of the basic kindergarten skills you saw on their assessment form during orientation.

In addition, we will begin our own assessments in class as well. Doing these assessments helps us to better gauge your students' academic and social abilities and provide necessary interventions.

## Parent Volunteers

We will ask for volunteers on an as-needed basis in the classroom, but a great way to get involved right away is to help with the "workbox" in the teacher's lounge. Teachers from all grades will place projects to be completed in the box. **Please remember to complete a KSD Background Investigation before volunteering.** The form can be completed online by visiting the KSD website, click the Community tab then click Volunteer. Thanks! ☺

## Dress for Success!

**Please make sure your child is dressed in appropriate clothing according to Ridge View's dress code. It is a Ridge View policy that children do not wear flip-flops to school. Also, we need to leave gum, hats, skateboards, Heely shoes/roller blades, and spaghetti strapped shirts at home. As the weather turns and gets colder outside, please have your child bring a sweatshirt or jacket to school. Please label all jackets sent to school. It is also a good time to start practicing zipping jackets and tying shoes—it is SO helpful if they are able to do that on their own! Thanks!**

## In the Classroom

For the next three weeks kindergarten will be focused on the theme "Our Community." We will be discussing our families, our school rules and our expectations. During this unit we will also focus on world map skills and Washington State.

We will also be diving into Journeys, our reading curriculum and our new math curriculum, Origo Stepping Stones. Our beginning reading unit focuses on main ideas and summarizing. Our first math module will focus on counting and cardinality.